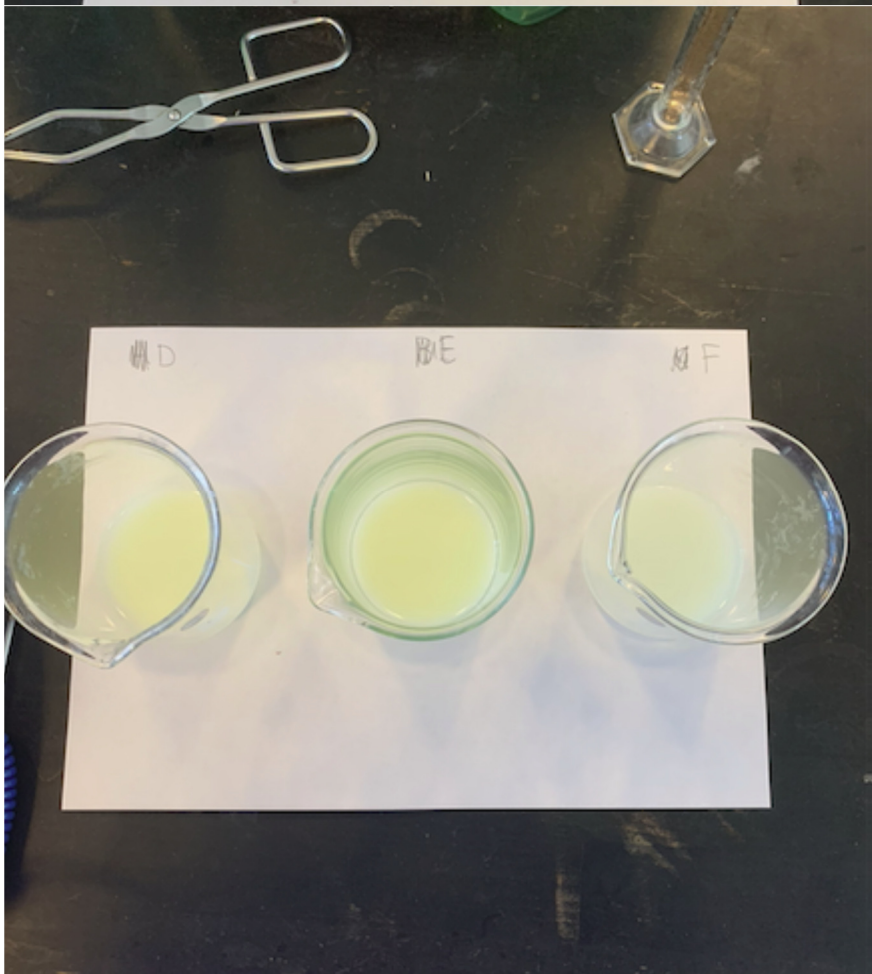
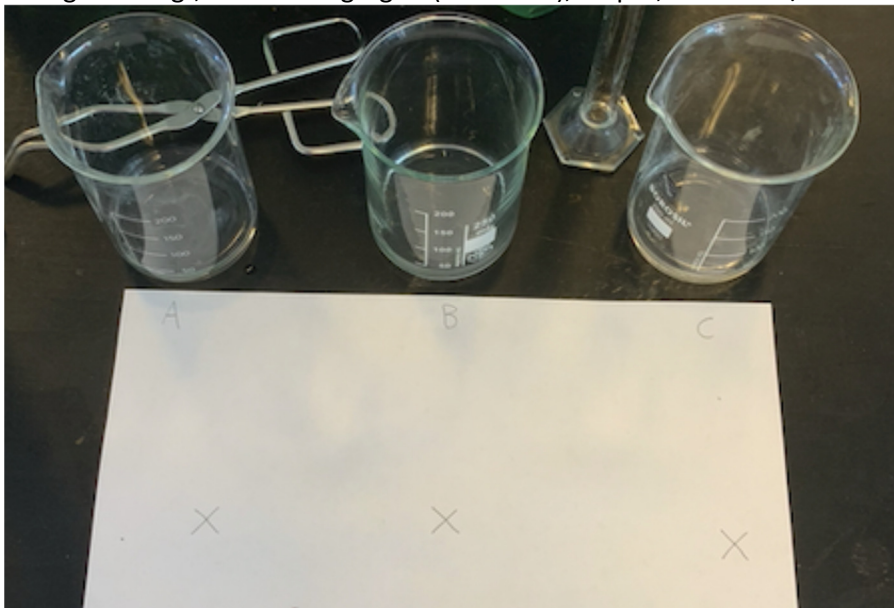
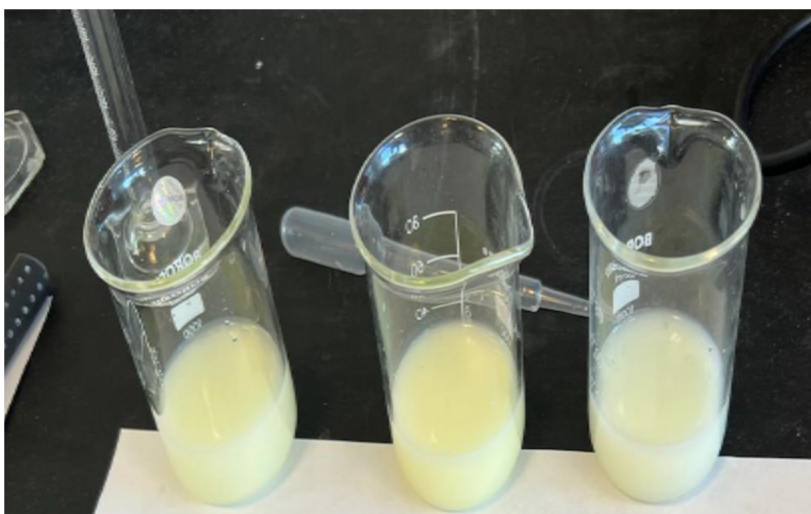
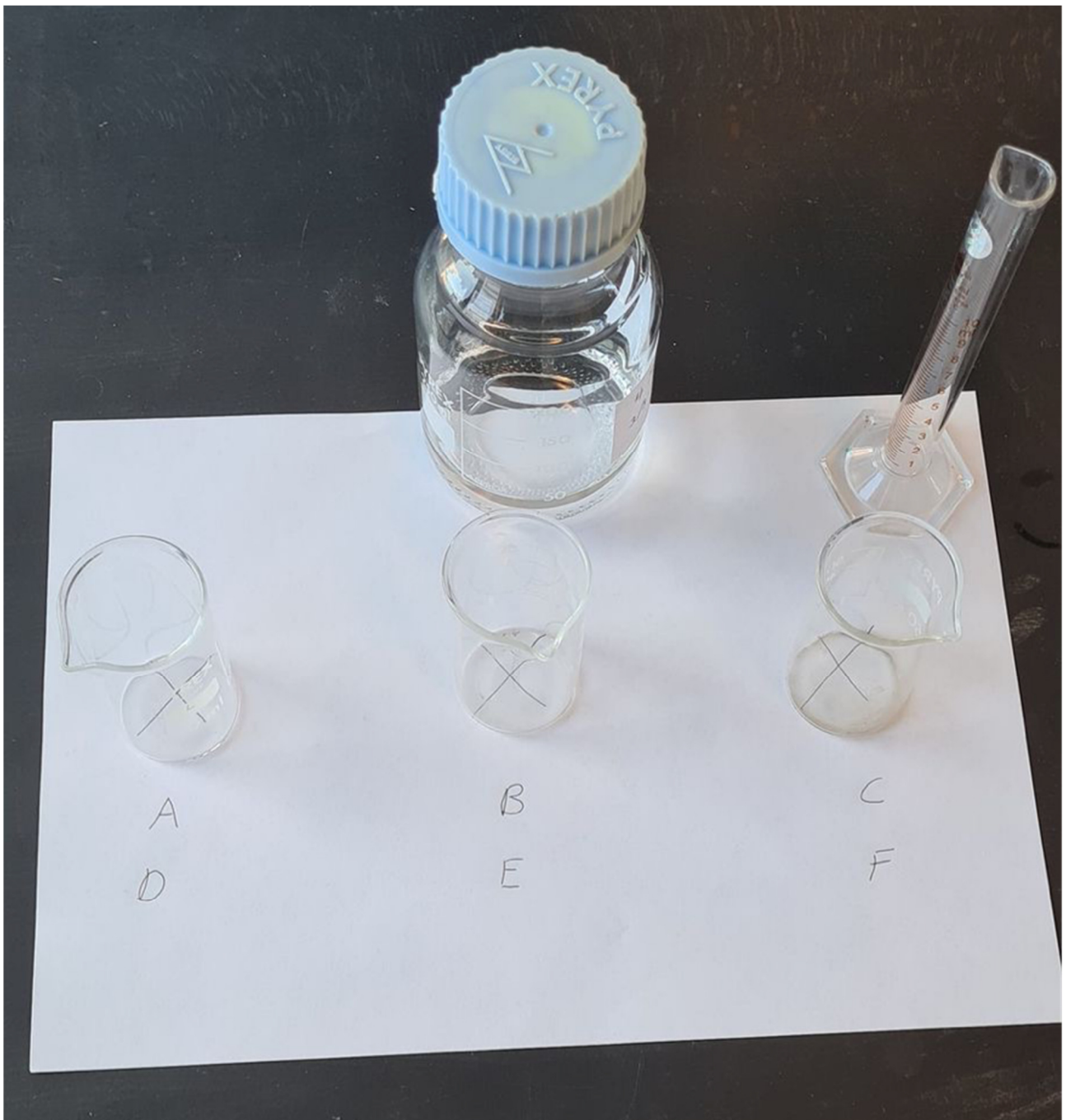


Fotos af opstillinger/udstyr.

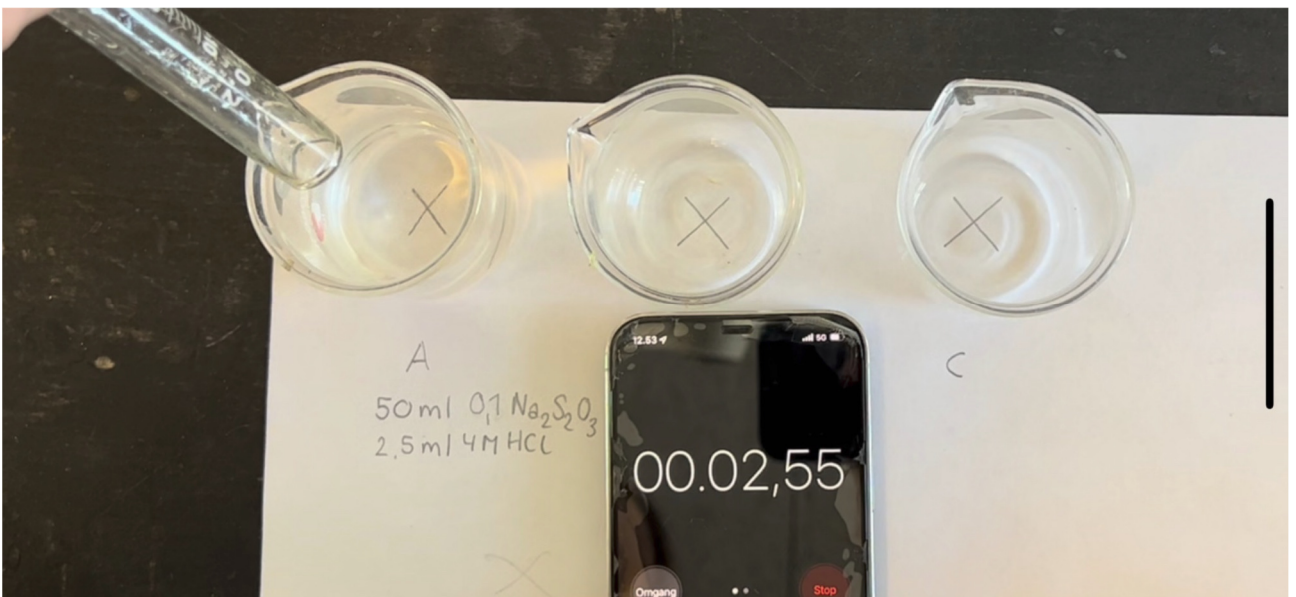
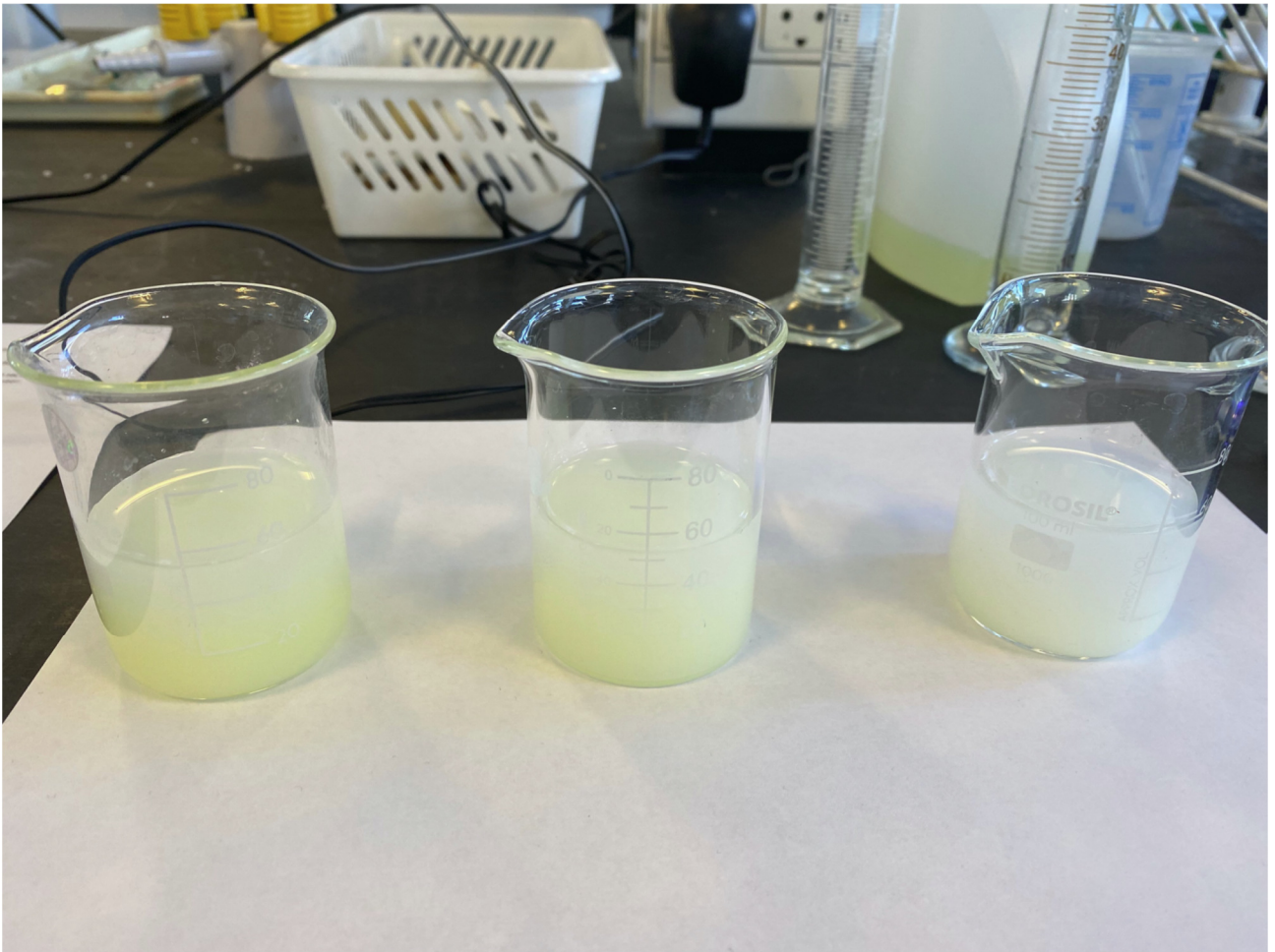
Øvelse 1. Reaktionstid I

Udstyr: 250 mL målekolbe + målekolbeprop (eller 500 mL), $\text{Na}_2\text{S}_2\text{O}_3$ (natriumthiosulfat), 4 M HCl (saltsyre), måleglas + tragt, 3 "ens" bægerglas (fx 250 mL), stopur, varmebad/bunsenbrænder, termometer.











A
D



B
E



C
F

